

INTERNATIONAL INDIAN SCHOOL

BURAIDAH

Worksheet For The Academic Year 2024-25

CLASS: VIII SUBJECT: Mathematics DATE: 13/02/2025

LESSON-15 Introduction to Graphs

- 1) A _____ graph shows the variation of data over a continuous period of time.
- 2) A _____ graph consists of a whole straight line.
- 3) A _____ graph consists of broken lines in it.
- 4) A _____ graph is used to find unknown values.
- 5) Represent the following data as a line graph:

a)

Days of week	1	2	3	4	5	6	7
Frequency	9	8	6	2	5	3	10

b)

Time	7am	8am	9am	10am	11am	12noon	1pm
Dist. From city A	0	50km	150km	250km	250km	350km	400km

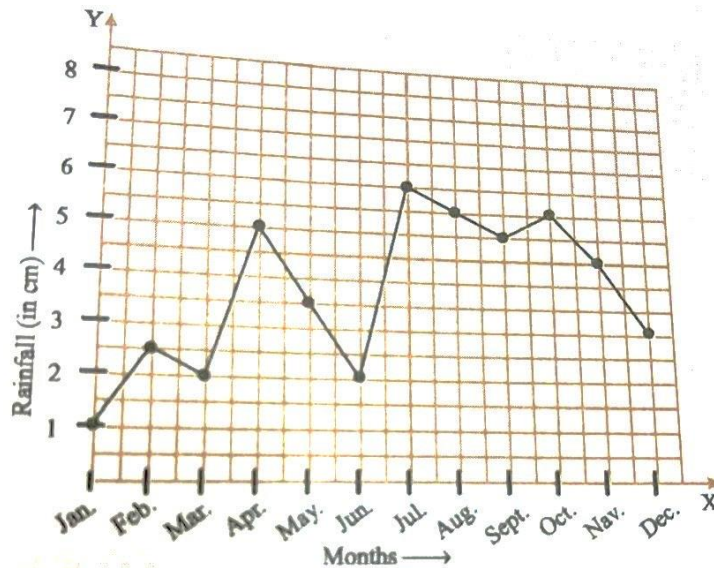
c)

Day	Sun	Mon	Tue	Wed	Thu	Fri	Sat
Temp(°C)	42	41.5	42.5	39	41	43	45

d)

Time	5am	9am	1pm	3pm
Temp(°C)	36	39	38	34

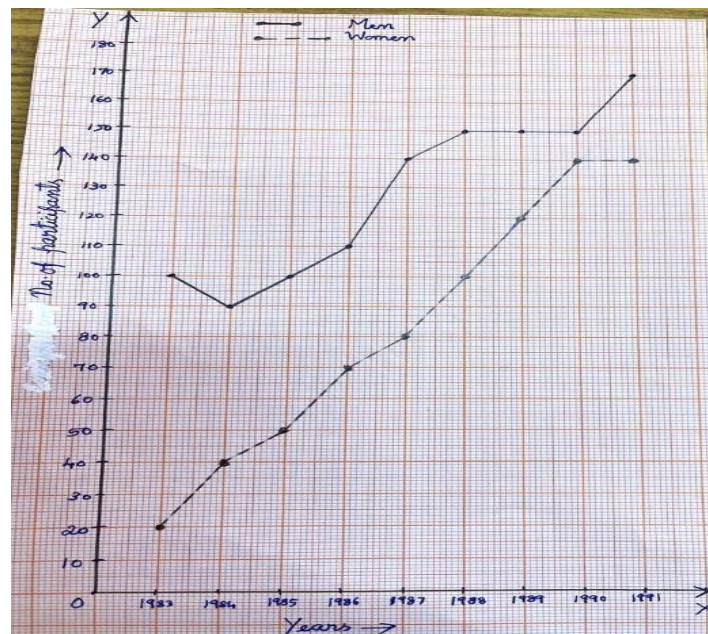
6)



Look at the graph and answer the following questions:

- Which was the wettest month?
- In which month was the rainfall minimum? How much was it?
- Calculate the total rainfall received during the months from April to June.
- What was the rainfall received in the month with the least number of days?

7)



The following graph shows the participation of men and women in sports.

Read from the graph to answer the following questions:

- What can you say about the participation of men and women in sports?
- In which year was the difference in participation of men and women the least?
- Between which years did the number of women participation increase the most?