

International Indian School Buraidah

Annual Examination 2023-24

Class – 7th / Subject – Science / Time Duration - 3hrs / Max. Marks – 80 / Set – A

Sample Paper

Q-1 Choose the Correct option – (12 X1 = 12 Marks)

1. Water that is not fit for use is called
(a) clean water. (b) Wastewater. (c) both (a) and (b). (d) none of these
2. Which of the following is not a source of wastewater?
(a) Sewers. (b) Homes. (c) Industries. (d) Hospitals
3. Which of the following is influenced by forests?
(a) Temperature. (b) Climate. (c) Animals. (d) All of these
4. The branchy part of a tree above the stem is called
(a) leaves. (b) crown. (c) saplings. (d) canopy
5. The path of the light is
(a) always a straight line. (b) a curved line. (c) a zig-zag line. (d) depends on the medium
6. The coloured band of light obtained by dispersion of light is called
(a) image. (b) spectrum. (c) convergence. (d) scattering
7. When the bulb gets fused, the electric current
(a) flows in the circuit. (b) does not flow in the circuit
(c) sometimes flows and sometimes not. (d) none of these
8. Which of the following statements is not correct?
(a) Forests protect the soil from erosion.
(b) Plants and animals in a forest are not dependent on one another.
(c) Forests influence the climate and water cycle.
(d) Soil helps forests to grow and regenerate.
9. Micro-organisms act upon the dead plants to produce
(a) sand. (b) mushrooms (c) humus (d) wood
10. WWTP stands for
(a) Wastewater therapy plant (b) Wastewater treatment plant
(c) Wastewater travel plant (d) Wastewater tremendous plant
11. When the switch is in the 'ON' position, the electric circuit is said to be
(a) closed. (b) open. (c) complete. (d) both (a) and (c)

12. In a bulb there is a thin wire called

- (a) filament. (b) coil. (c) element. (d) fuse wire

Q-2 Fill in the blanks – (13 X1 =13 Marks)

1. Drains get blocked by _____ and _____.
2. Wastewater released by houses is called _____.
3. The decaying leaves and animal droppings in a forest enrich the _____.
4. The insects, butterflies, Honeybees and birds help flowering plants in _____.
5. An image that cannot be obtained on a screen is called _____.
6. Image formed by a convex is _____ always virtual and smaller in size.
7. When current is switched 'on' in a room heater, it _____.
8. The safety device based on the heating effect of electric current is called a _____.
9. Production of new individuals from the vegetative part of parent is _____.
10. Seed dispersal takes place by means of _____ and _____.
11. Water reaches great heights in the trees because of suction pull caused by _____.
12. Arteries and veins are joined by a network of _____.
13. Kidneys eliminate the waste materials in the liquid form called _____.

Q-3 Write the answer to the following Questions in one word or a sentence. (10X1=10 Marks)

1. Name some useful products or materials that are carried by blood.
2. Write the full form of WBC.
3. Name the Part of the plant that take part in sexual reproduction.
4. Write the type of motion of wheel.
5. What is the name of the metallic ball in the pendulum.?
6. Which meter measures the distance moved by the vehicle?
7. What is the full form of MCB?
8. What does the outer surface of the spoon acts like?

9. White light is composed of how many colours?

10. Who is known as the green lungs ?

Q-4 Write the answers of the following Question –(Any – 5) (2X5=10 Marks)

1. Give one use of each concave and convex mirror.
2. Draw the symbols to represent the following components of electrical circuits: connecting wires, switch in the 'OFF' position, bulb, cell, switch in the 'ON' position and battery.
3. What is sludge?
4. Name two chemicals used to disinfect water.
5. Define Vascular tissues.
6. Define Xylem

Q-5. Write the answers to the following Question – (Any – 5) (3X5=15 Marks)

1. Explain the difference between self-pollination and cross-pollination.
2. simple pendulum takes 32s to complete 20 oscillations, what is the time period of the pendulum?
3. What are decomposers? Name any two of them. What do they do in the forest?
4. Draw the circuit diagram to represent the circuit shown in the following figure.

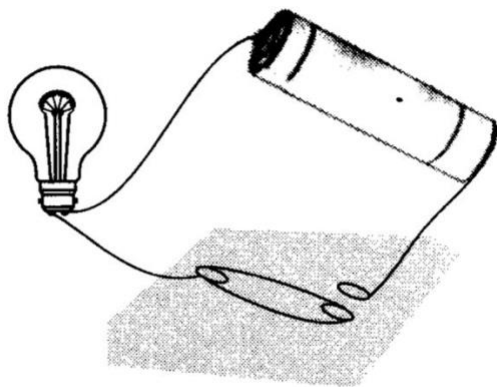


Fig. 14.9

5. Outline your role as an active citizen in relation to sanitation.

6. What will happen if there are no platelets in the blood?

Q-6 Write the answers to the following Question- (any-5)(4X5=20 Marks)

- 1. Describe the function of the heart with the help of a diagram.**
- 2. Explain what you understand by sexual reproduction.**
- 3. The odometer of a car reads 57321.0 km when the clock shows the time 08:30 AM. What is the distance moved by the car, if at 08:50 AM, the odometer reading has changed to 57336.0 km? Calculate the speed of the car in km/min during this time. Express the speed in km/h also.**
- 4. Explain the role of forest in maintaining the balance between oxygen and carbon dioxide in the atmosphere.**
- 5. Describe the steps involved in getting clarified water from wastewater.**
- 6. Explain the difference between the Concave and Convex lens with the help of a diagram.**